

Education Dashboard 2023

Outcomes

EYFSP - % achieving GLD	2018	2019	2022*	2023	Trend (2022-2023)
All Pupils	69.9	72.6	64.3	67.2	↗
National	71.5	71.8	63.4	65.6	↗
Free School Meals (FSM)	48.0	54.0	46.0	46.1	↗
Non Free School Meals (Non FSM)	72.0	75.0	67.0	71.1	↗
SEND (SEN Support & EHCP)	24.0	27.0	18.5	21.1	↗
EHCP	5.0	7.0	5.0	5.6	↗
SEN Support	33.0	31.0	22.8	26.3	↗
Non SEND	74.0	77.0	68.6	72.6	↗
CLA (Nexus 903 Data - no SFR published)	50.0	40.0	41.7	40.7	↘
CLA (all children)					

* 2022 and 2023 data is non comparative to earlier years due to EYFS reforms introduced in Sept 21

EYFSP - % Com, Lang & Lit (new indicator)	2018	2019	2022*	2023*	Trend (2022-2023)
All Pupils			67.4	69.6	↗
National			67.1	68.8	↗
Free School Meals (FSM)			48.6	49.1	↗
Non Free School Meals (Non FSM)			70.1	73.3	↗
SEND (SEN Support & EHCP)			22.5	24.6	↗
EHCP			6.7	8.5	↗
SEN Support			27.5	30.0	↗
Non SEND			71.6	74.9	↗
CLA (Nexus 903 Data - not published)			not in nexus but coming soon		•
CLA (all children)					

* 2022 and 2023 data is non comparative to earlier years due to EYFS reforms introduced in Sept 21

Latest Benchmark 2023

Shropshire	National	Statistical Neighbour	West Midlands
67.2	65.6	66.9	64.4
46.1	49.7	47.1	51.7
71.1	69.9	70.6	68.9
21.1	18.7	22.2	19.1
5.6	3.5	3.3	1.7
26.3	23.0	26.9	23.3
72.6	72.4	73.2	71.8
40.7	41.0	not available	39.0
No published comparators			

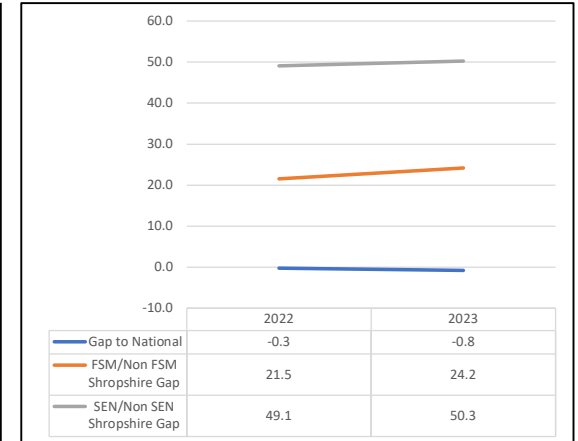
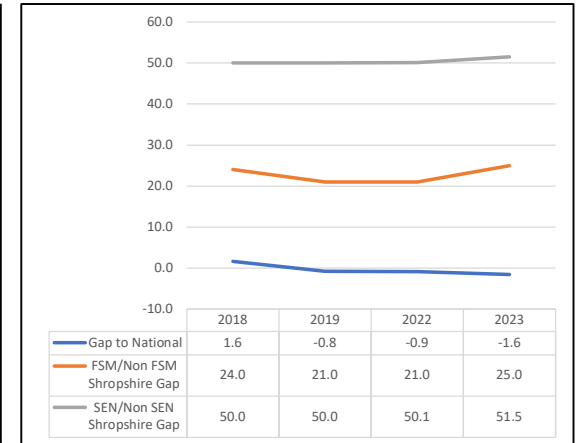
Shropshire	National	Statistical Neighbour	West Midlands
69.6	68.8	70.2	67.4
49.1	53.1	50.7	54.8
73.3	71.4	73.7	71.8
24.6	22.2	25.7	22.1
8.5	4.9	5.0	2.5
30.0	27.1	30.7	26.8
74.9	75.5	76.4	74.7
No published comparators			
No published comparators			

National Ranking (1 being highest, 152 lowest)

2019	2022	2023
59	62	54
92	91	119
52	88	56
48	60	34
34	29	28
53	68	42
77	90	71
No published comparators		
No published comparators		

2019	2022	2023
No published comparators	69	61
	111	121
	101	77
	58	42
	32	18
	57	49
104	90	
No published comparators		
No published comparators		

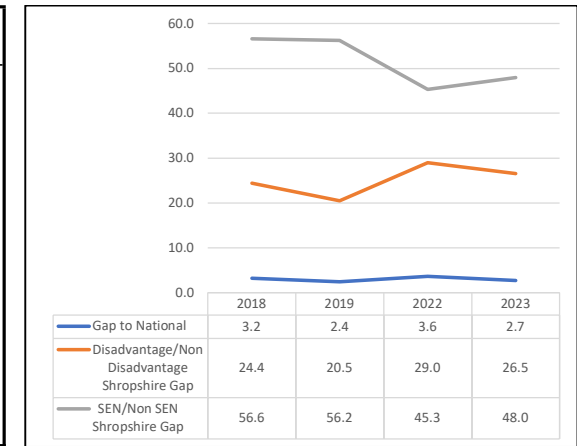
Gaps



KS1 Reading, Writing and Maths EXS+	2018	2019	2022	2023	Trend
All Pupils	62.1	62.5	49.8	53.3	
National (Nexus)	65.3	64.9	53.4	56.0	
Disadvantage	41.5	45.2	25.9	31.8	
Non Disadvantage	65.9	65.7	54.9	58.3	
SEND (SEN Support & EHCP)	12.7	14.6	11.1	12.5	
EHCP	4.2	1.3	5.4	5.3	
SEN Support	14.9	17.5	12.6	13.9	
Non SEND	69.3	70.8	56.4	60.5	
CLA (<i>Nexus 903 Data - not published</i>)	45.5	0.0	26.7	37.0	
CLA (all children)					

Shropshire	National (Nexus)	Statistical Neighbour	West Midlands
53.3	56.0	N/A	55.9
31.8	Not available		
58.3			
12.5			
5.3			
13.9			
60.5			
37.0	32.0	not available	37.0
No published comparators			

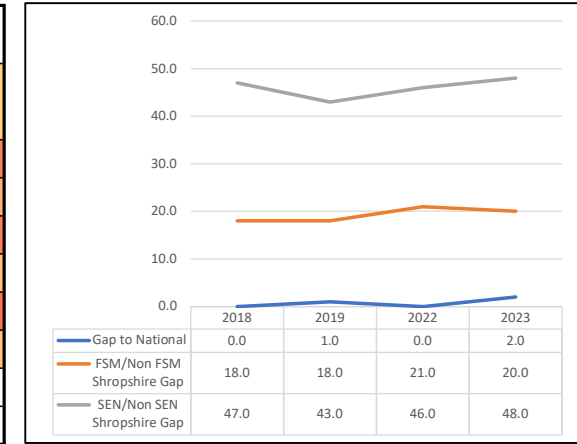
2019	2022	2023
RWM EXS+ not published by DfE, so data from other authorities is not available for comparison		



KS1 - Year 1 Phonics	2018	2019	2022	2023	Trend
All Pupils	82.0	81.0	75.0	77.0	
National	82.0	82.0	75.0	79.0	
Free School Meals (FSM)	65.0	65.0	58.0	60.0	
Non Free School Meals (Non FSM)	83.0	83.0	79.0	80.0	
SEND (SEN Support & EHCP)	40.0	43.0	35.0	36.0	
EHCP	10.0	22.0	15.0	14.0	
SEN Support	49.0	49.0	39.0	41.0	
Non SEND	87.0	86.0	81.0	84.0	
CLA (<i>Nexus 903 Data - not published</i>)	66.7	87.5	58.8	50.0	
CLA (all children)					

Shropshire	National	Statistical Neighbour	West Midlands
77.0	79.0	79.0	78.0
60.0	66.0	63.0	69.0
80.0	82.0	82.0	82.0
36.0	42.0	42.0	41.0
14.0	20.0	20.0	14.0
41.0	48.0	47.0	47.0
84.0	86.0	86.0	86.0
50.0	61.0	not available	65.0
No published comparators			

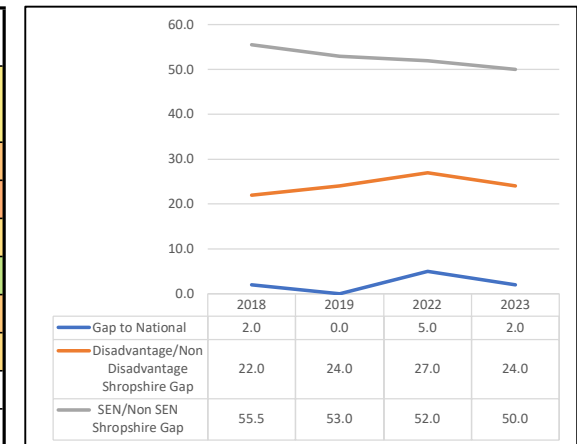
2019	2022	2023
91	78	108
123	110	137
98	78	119
73	106	137
52	99	114
59	115	143
124	92	112
No published comparators		
No published comparators		



KS2 - RWM EXS+	2018	2019	2022	2023	Trend
All Pupils	63.0	65.0	54.0	58.0	
National	65.0	65.0	59.0	60.0	
Disadvantage	46.0	47.0	34.0	39.0	
Non Disadvantage	68.0	71.0	61.0	63.0	
SEND (SEN Support & EHCP)	17.5	22.0	13.0	18.0	
EHCP	9.7	14.0	7.0	8.0	
SEN Support	19.5	23.0	14.0	20.0	
Non SEND	73.0	75.0	65.0	68.0	
CLA (<i>Nexus 903 Data - not published</i>)	40.0	25.0	42.0	39.1	
CLA (all children)					

Shropshire	National	Statistical Neighbour	West Midlands
58.0	60.0	57.0	59.0
39.0	44.0	38.0	46.0
63.0	67.0	63.0	66.0
18.0	20.0	17.0	18.0
8.0	8.0	7.0	5.0
20.0	24.0	20.0	21.0
68.0	70.0	69.0	68.0
39.1	36.0	tbc	35.0
No published comparators			

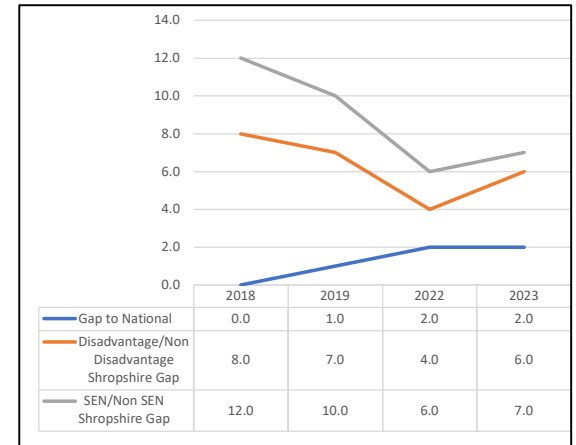
2019	2022	2023
78	134	95
106	141	113
79	135	120
73	138	102
18	62	64
91	144	111
72	129	104
-	9	tbc
No published comparators		



KS2 - RWM GDS+	2018	2019	2022	2023	Trend
All Pupils	10.0	10.0	5.0	6.0	
National	10.0	11.0	7.0	8.0	
Disadvantage	4.0	5.0	2.0	2.0	
Non Disadvantage	12.0	12.0	6.0	8.0	
SEND (SEN Support & EHCP)	0.0	2.0	0.0	1.0	
EHCP	0.0	3.0	0.0	0.0	
SEN Support	0.0	1.0	0.0	1.0	
Non SEND	12.0	12.0	6.0	8.0	
CLA (Nexus 903 Data - not published)	10.0	0.0	6.7	0.0	
CLA (all children)					

Shropshire	National	Statistical Neighbour	West Midlands
6.0	8.0	7.0	7.0
2.0	3.0	3.0	3.0
8.0	10.0	9.0	9.0
1.0	1.0	1.0	1.0
0.0	1.0	1.0	-
1.0	2.0	1.0	1.0
8.0	10.0	9.0	9.0
0.0	tbc	tbc	tbc
No published comparators			

2019	2022	2023
72	111	104
42	70	95
87	125	102
127	-	55
2	-	-
81	-	72
73	114	94
-	-	-
No published comparators		

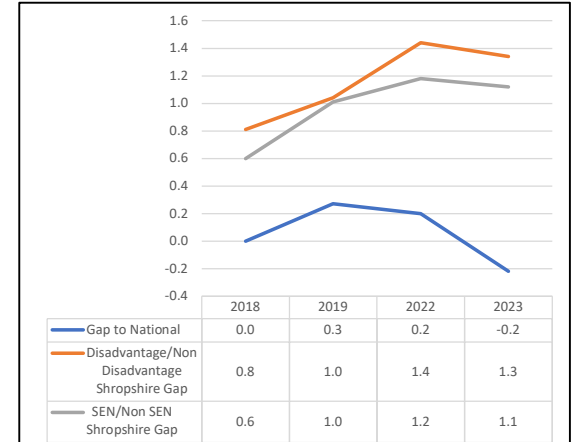


Data Source: published DfE statistics and NCER Nexus. N.B. There is no data for 2020 and 2021 due to the impact of Covid 19 and the cancellation of all end of year key stage assessments

KS2 - Average Progress Reading	2018	2019	2022	2023	Trend
All Pupils	0.00	-0.24	-0.16	0.26	
National	0.00	0.03	0.04	0.04	
Disadvantage	-0.63	-1.03	-1.27	-0.77	
Non Disadvantage	0.18	0.01	0.17	0.57	
SEND (SEN Support & EHCP)	-0.50	-1.07	-1.11	-0.64	
EHCP	-0.88	-0.34	-4.81	-2.05	
SEN Support	-0.41	-1.22	-0.51	-0.49	
Non SEND	0.10	-0.06	0.07	0.48	
CLA (Nexus 903 Data - not published)	3.23	0.85	-2.30	0.04	
CLA (all children)					

Shropshire	National	Statistical Neighbour	West Midlands
0.26	0.04	-0.01	-0.10
-0.77	-0.85	-1.13	-0.71
0.57	0.43	0.35	0.23
-0.64	-1.42	-1.53	-1.35
-2.05	-4.36	-4.22	-4.45
-0.49	-0.58	-0.83	-0.58
0.48	0.42	0.40	0.22
0.04	tbc	tbc	-0.54
No published comparators			

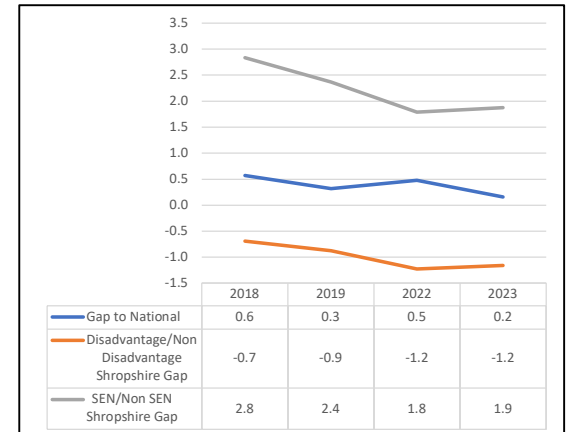
2019	2022	2023
111	104	59
105	102	75
113	107	67
57	42	36
8	95	8
95	55	80
120	120	73
tbc	tbc	tbc
No published comparators		



KS2 - Average Progress Writing	2018	2019	2022	2023	Trend
All Pupils	-0.57	-0.29	-0.43	-0.12	
National	0.00	0.03	0.05	0.04	
Disadvantage	-1.10	-0.96	-1.37	-1.02	
Non Disadvantage	-0.41	-0.08	-0.14	0.14	
SEND (SEN Support & EHCP)	-2.93	-2.24	-1.87	-1.63	
EHCP	-2.27	0.27	-3.95	-5.00	
SEN Support	-3.08	-2.77	-1.53	-1.25	
Non SEND	-0.09	0.13	-0.08	0.25	
CLA (Nexus 903 Data - not published)	0.80	0.72	-1.18	0.70	
CLA (all children)					

Shropshire	National	Statistical Neighbour	West Midlands
-0.12	0.04	-0.27	-0.01
-1.02	-0.69	-1.39	-0.56
0.14	0.36	0.09	0.29
-1.63	-2.18	-2.59	-2.05
-5.00	-4.41	-4.91	-4.46
-1.25	-1.53	-1.45	-2.00
0.25	0.62	0.36	0.52
0.70	tbc	tbc	-0.74
No published comparators			

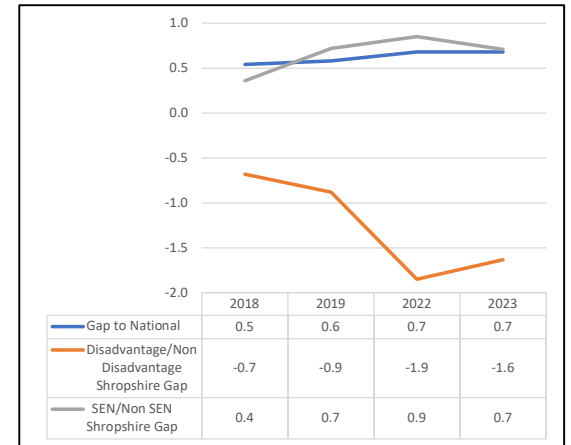
2019	2022	2023
109	120	99
103	110	101
111	123	106
78	70	53
1	74	109
136	80	65
114	129	116
tbc	tbc	tbc
No published comparators		



KS2 - Average Progress Maths	2018	2019	2022	2023	Trend
All Pupils	-0.54	-0.55	-0.64	-0.64	
National	0.00	0.03	0.04	0.04	
Disadvantage	-1.07	-1.21	-2.06	-1.90	
Non Disadvantage	-0.39	-0.33	-0.21	-0.27	
SEND (SEN Support & EHCP)	-0.84	-1.13	-1.32	-1.21	
EHCP	-1.97	-0.73	-4.76	-4.00	
SEN Support	-0.59	-1.21	-0.76	-0.90	
Non SEND	-0.48	-0.41	-0.47	-0.50	
CLA (Nexus 903 Data - not published)	0.78	-2.66	-1.63	-1.73	
CLA (all children)					

Shropshire	National	Statistical Neighbour	West Midlands
-0.64	0.04	-0.72	-0.03
-1.90	-1.04	-2.01	-0.89
-0.27	0.51	-0.31	0.43
-1.21	-1.57	-2.06	-1.47
-4.00	-4.12	-4.55	-4.36
-0.90	-0.84	-0.75	-1.44
-0.50	0.45	-0.36	0.34
-1.73	tbc	tbc	-1.00
No published comparators			

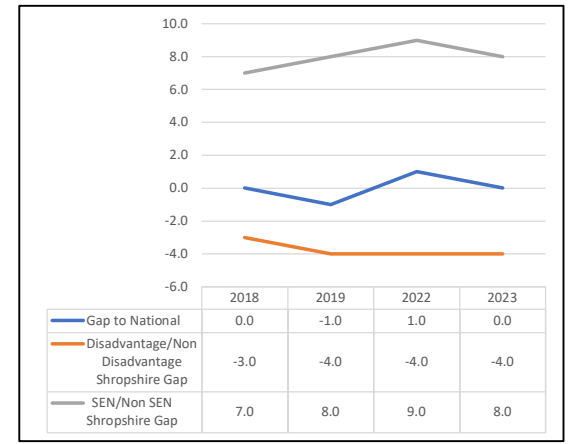
2019	2022	2023
123	127	129
99	124	126
128	129	132
60	74	65
6	115	82
94	71	90
132	136	138
tbc	tbc	tbc
No published comparators		



KS2 - Average Scaled Score in Reading	2018	2019	2022	2023	Trend
All Pupils	105	105	104	105	
National	105	104	105	105	
Disadvantage	103	102	101	102	
Non Disadvantage	106	106	105	106	
SEND (SEN Support & EHCP)	100	98	97	99	
EHCP	98	98	96	99	
SEN Support	99	98	97	99	
Non SEND	107	106	106	107	
CLA (Nexus 903 Data - not published)	104	99	101	99	
CLA (all children)					

Shropshire	National	Statistical Neighbour	West Midlands
105	105	105	105
102	102	102	103
106	106	106	106
99	99	99	98
99	98	98	97
99	99	99	99
107	106	107	106
99	tbc	tbc	102
No published comparators			

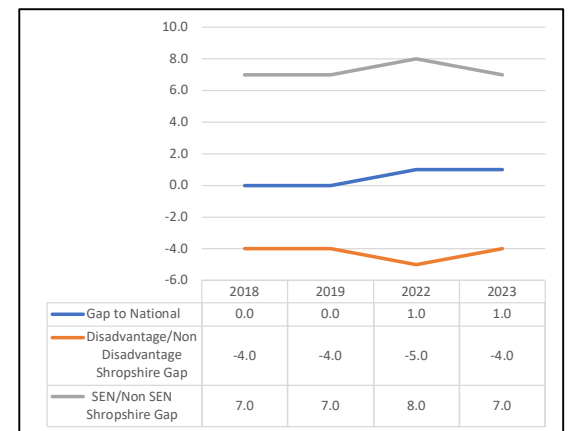
2019	2022	2023
28	99	52
45	113	70
22	105	56
37	105	68
17	49	16
46	114	75
35	58	22
tbc	tbc	tbc
No published comparators		



KS2 - Average Scaled Score in Maths	2018	2019	2022	2023	Trend
All Pupils	104	105	103	103	
National	104	105	104	104	
Disadvantage	101	102	99	100	
Non Disadvantage	105	106	104	104	
SEND (SEN Support & EHCP)	98	99	96	97	
EHCP	96	98	96	97	
SEN Support	98	99	96	97	
Non SEND	105	106	104	105	
CLA (Nexus 903 Data - not published)	97	97	101	97	
CLA (all children)					

Shropshire	National	Statistical Neighbour	West Midlands
103	104	103	104
100	101	100	102
104	105	104	105
97	98	97	97
97	96	95	95
97	98	98	97
105	106	105	105
97	tbc	tbc	100
No published comparators			

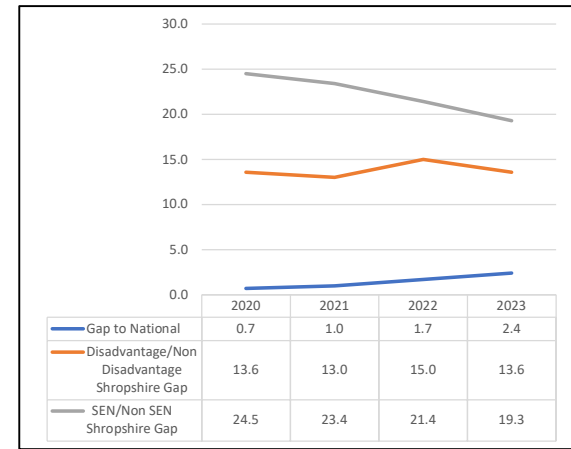
2019	2022	2023
47	94	118
74	138	108
56	111	131
31	119	90
24	43	31
41	128	101
67	118	78
tbc	tbc	tbc
No published comparators		



KS4 - Attainment 8	2020	2021	2022	2023	Trend
All Pupils	49.5	49.9	47.2	44.0	
National	50.2	50.9	48.9	46.4	
Disadvantage	38.5	39.6	35.1	33.0	
Non Disadvantage	52.1	52.6	50.1	46.6	
SEND (SEN Support & EHCP)	27.7	29.5	28.6	27.4	
EHCP	20.2	22.9	19.2	18.3	
SEN Support	33.1	33.4	32.6	30.6	
Non SEND	52.2	52.9	50.0	46.7	
CLA (based on published 903 - Nexus where published statistics are suppressed)	25.0	28.9	24.1	18.9	
CLA (all children)					

Shropshire	National	Statistical Neighbour	West Midlands
44.0	46.4	45.3	44.9
33.0	35.1	32.2	35.6
46.6	50.4	48.5	49.1
27.4	28.1	27.3	27.7
18.3	14.0	13.6	13.0
30.6	33.3	32.0	32.6
46.7	50.2	49.1	48.5
18.9	19.8	tbc	21.0
No published comparators			

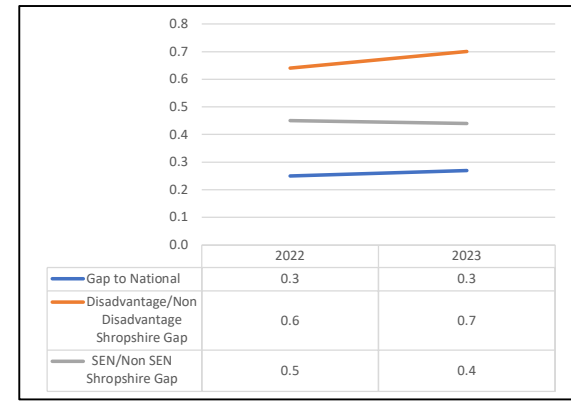
2021	2022	2023
89	97	114
63	108	97
115	116	138
99	85	80
6	17	18
123	107	114
102	115	128
17	28	tbc
No published comparators		



KS4 - Progress 8	2020*	2021*	2022	2023	Trend
All Pupils	No progress data available for 2020 and 2021		-0.28	-0.30	
National			-0.03	-0.03	
Disadvantage			-0.80	-0.87	
Non Disadvantage			-0.16	-0.17	
SEND (SEN Support & EHCP)			-0.67	-0.68	
EHCP			-1.04	-0.92	
SEN Support			-0.53	-0.61	
Non SEND			-0.22	-0.24	
CLA (based on published 903)			-1.09	-1.42	

Shropshire	National	Statistical Neighbour	West Midlands
-0.30	-0.03	-0.08	-0.09
-0.87	-0.57	-0.71	-0.52
-0.17	0.17	0.08	0.10
-0.68	-0.62	-0.63	-0.56
-0.92	-1.12	-1.16	-1.03
-0.61	-0.45	-0.47	-0.42
-0.24	0.10	0.04	0.01
-1.42	-1.24	tbc	-1.10

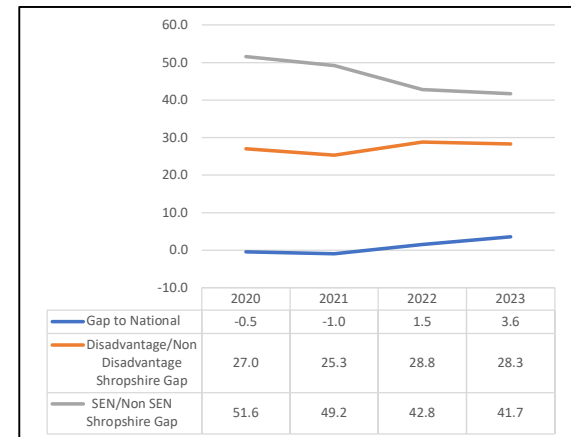
2021*	2022	2023
No progress data available	134	137
	126	128
	142	143
	72	92
	32	35
	82	114
	144	13
	41	tbc



KS4 (9 to 4) in English and Maths	2020	2021	2022	2023	Trend
All Pupils	71.7	73.2	67.5	61.8	
National	71.2	72.2	69.0	65.4	
Disadvantage	49.8	53.1	44.3	38.9	
Non Disadvantage	76.8	78.4	73.1	67.2	
SEND (SEN Support & EHCP)	25.7	30.2	30.3	25.9	
EHCP	17.2	28.1	18.0	16.0	
SEN Support	31.9	31.4	35.5	29.3	
Non SEND	77.3	79.4	73.1	67.6	
CLA (based on published 903)	25.8	42.3	29.4	16.7	
CLA (all children)					

Shropshire	National	Statistical Neighbour	West Midlands
61.8	65.4	64.4	62.1
38.9	43.7	38.9	43.4
67.2	73.1	70.9	70.4
25.9	30.5	28.5	28.1
16.0	13.0	11.1	11.0
29.3	36.9	34.3	33.7
67.6	72.4	72.2	69.1
16.7	tbc	tbc	tbc
No published comparators			

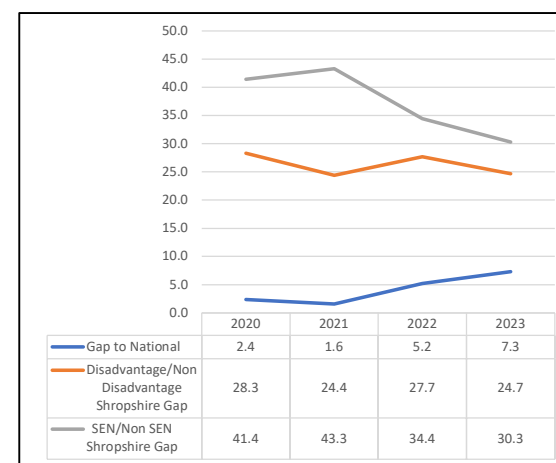
2021	2022	2023
61	87	109
58	98	105
86	115	137
113	86	113
3	34	39
138	100	125
70	108	120
12	20	tbc
No published comparators		



KS4 (9 to 5) in English and Maths	2020	2021	2022	2023	Trend
All Pupils	47.5	50.3	44.8	38.2	
National	49.9	51.9	50.0	45.5	
Disadvantage	24.6	31.0	22.4	18.2	
Non Disadvantage	52.9	55.4	50.1	42.9	
SEND (SEN Support & EHCP)	10.7	12.4	14.9	12.1	
EHCP	7.5	14.4	9.9	5.7	
SEN Support	13.0	11.3	17.0	14.3	
Non SEND	52.1	55.7	49.3	42.4	
CLA (based on published 903 - Nexus where published statistics are suppressed)	10.5	16.7	11.8	4.2	
CLA (all children)					

Shropshire	National	Statistical Neighbour	West Midlands
38.2	45.5	43.0	41.9
18.2	25.4	19.9	24.9
42.9	52.6	48.8	49.4
12.1	17.0	14.9	15.4
5.7	6.9	6.5	5.5
14.3	20.7	17.8	18.7
42.4	51.3	49.1	47.3
4.2	10.0	tbc	9.0
No published comparators			

2021	2022	2023
86	118	128
61	134	136
107	133	144
132	99	130
6	27	81
145	119	130
95	128	136
Unable to provide rank as suppressed figures in DfE publication		
No published comparators		



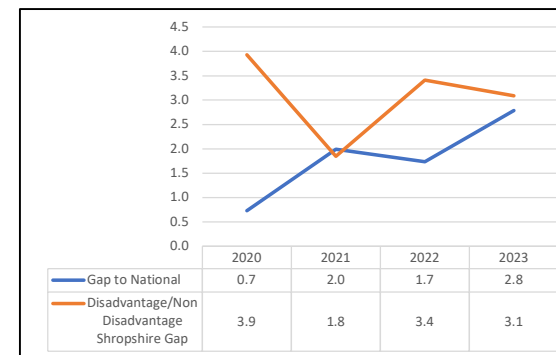
Data Source; published DfE statistics

In 2020 and 2021, all GCSEs in England have been reformed and use the new 9 to 1 grading system (rather than A*-G). Year on year comparisons will be limited until these qualifications are consistently included from 2020 onwards. However, results for 2020 and 2021 are not comparable with earlier years due to the cancellation of exams (due to COVID-19) and the changes to the way GCSE grades were awarded and results for 2022 are not comparable with previous years due to the changes relating to grading assessments

KS5 APS per A-Level Entry (State-Funded Schools and Colleges)	2020	2021	2022	2023	Trend
All Pupils	37.82	38.47	36.12	31.37	
National	38.55	40.46	37.86	34.16	
Disadvantage	34.21	36.81	32.78	28.72	
Non Disadvantage	38.14	38.66	36.19	31.81	
SEND (SEN Support & EHCP)					
EHCP	39.13	36.07	31.94	33.89	
SEN Support	35.70	36.61	34.46	27.86	
Non SEND	37.79	38.61	35.92	31.52	

Shropshire	National	Statistical Neighbour	West Midlands
31.37	34.16	33.79	32.93
28.72	29.91	29.11	29.16
31.81	34.82	34.20	33.65
33.89	32.38	29.35	30.67
27.86	32.08	30.74	31.33
31.52	34.21	33.90	33.01

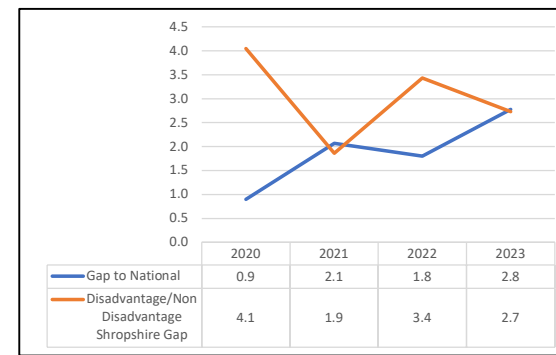
2021	2022	2023
123	105	122
52	84	93
129	119	123
92	103	63
101	89	122
121	113	120



KS5 APS per Academic Entry (State-Funded Schools and Colleges)	2020	2021	2022	2023	Trend
All Pupils	37.68	38.43	36.12	31.48	
National	38.58	40.50	37.92	34.26	
Disadvantage	33.96	36.77	32.76	29.16	
Non Disadvantage	38.01	38.63	36.19	31.89	
SEND (SEN Support & EHCP)					
EHCP	39.41	36.07	31.94	33.83	
SEN Support	35.69	36.13	34.53	28.73	
Non SEND	37.63	38.59	35.91	31.62	

Shropshire	National	Statistical Neighbour	West Midlands
31.48	34.26	33.89	33.01
29.16	29.96	29.21	29.23
31.89	34.92	34.30	33.74
0.00			
33.83	32.31	29.46	30.56
28.73	32.13	30.90	31.43
31.62	34.32	34.00	33.09

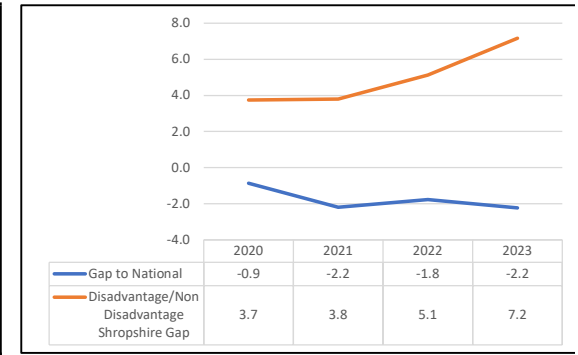
2021	2022	2023
124	107	123
52	87	86
131	119	123
91	103	61
110	89	114
124	113	120



KS5 APS per Applied General (State-Funded Schools and Colleges)	2020	2021	2022	2023	Trend
All Pupils	32.08	34.83	33.68	31.74	
National	31.22	32.63	31.91	29.52	
Disadvantage	29.12	31.63	29.07	25.89	
Non Disadvantage	32.86	35.42	34.20	33.06	
SEND (SEN Support & EHCP)					
EHCP	15.00	25.00	26.18	32.86	
SEN Support	42.50	35.00	35.87	30.64	
Non SEND	32.33	34.97	33.89	31.86	

Shropshire	National	Statistical Neighbour	West Midlands
31.74	29.52	29.68	30.15
25.89	27.70	27.13	28.44
33.06	30.10	30.08	30.83
0.00			
32.86	26.88	24.46	28.39
30.64	26.90	26.65	27.86
31.86	29.80	29.96	30.39

2021	2022	2023
27	40	27
56	90	113
30	43	16
97	100	23
16	2	15
31	43	27

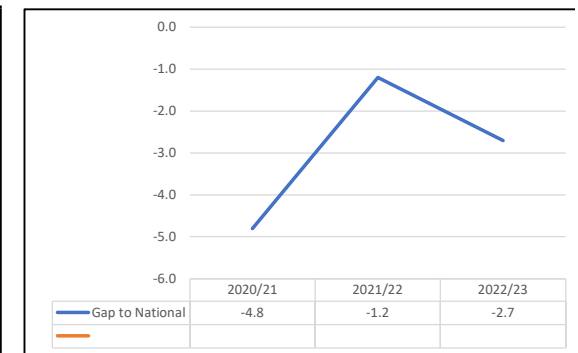


Data Source: published DfE statistics

% NEET (inc not known 16-17 year olds)	2020/21	2021/22	2022/23	2023/24	Trend
All Pupils	10.3	5.9	7.9		
National	5.5	4.7	5.2		
Disadvantage	No published data				•
Non Disadvantage	No published data				•
SEND (SEN Support & EHCP)					
EHCP	16.2	9.4	13.8		
SEN Support	19.1	9.5	18.5		
Non SEND	9.3	5.4	7.1		
CLA (based on published 903 - Nexus where published statistics are suppressed)					
CLA (all children)			12.0		

Shropshire	National	Statistical Neighbour	West Midlands
7.9	5.2	5.4	5.2
No published comparators			
No published comparators			
0.0			
13.8	10.1	11.5	9.7
18.5	9.3	9.7	11.3
7.1	4.6	4.5	4.5
No published comparators			

2020/21	2021/22	2022/23
149	122	140
No published comparators		
No published comparators		
145	96	128
137	96	135
147	126	135
No published comparators		



Data Source: published DfE statistics NEET and activity not known 16-17 year olds at end 2022 (average of December, January and February) (published July 2023)

Attendance

Latest Benchmark 2023

National Ranking (1 being highest, 152 lowest)

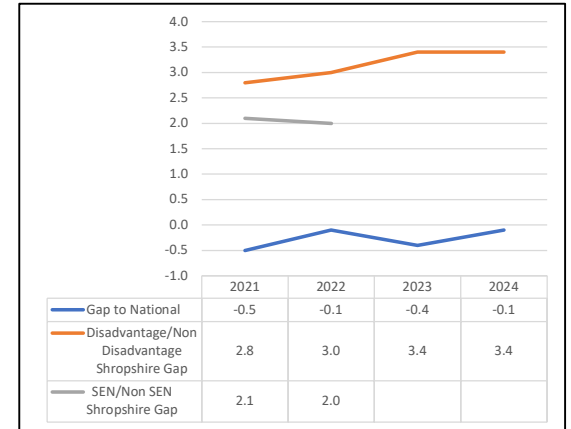
Gaps

* DfE Portal

Primary School Attendance (Full Academic Year)	2021	2022	2023	* current 2023-2024 to date	Trend
All Pupils	96.9	93.8	94.5	94.7	
National	96.4	93.7	94.1	94.6	
Free School Meals (eligible in the last 6 years (FSM6))	94.6	91.4	91.8	91.9	
Non Free School Meals (not eligible in the last 6 years (FSM6))	97.4	94.4	95.2	95.3	
SEND (SEN Support & EHCP)	95.1	92.1	92.5		
EHCP	90.9	90.2	90.2	89.8	
SEN Support	95.6	92.3	92.8	93.2	
Non SEND	97.2	94.1	94.9	95.0	
CLA (based on published 903)	94.5	95.2			
CLA (all children)			95.4		

Shropshire	National	Statistical Neighbour	West Midlands
94.5	94.1	94.2	93.8
91.8	91.6	91.4	91.6
95.2	95.1	95.0	94.9
92.5	91.9	91.9	91.7
90.2	90.1	89.6	89.5
92.8	92.2	92.3	91.9
94.9	94.6	94.8	94.3
0.0			
No published comparators			

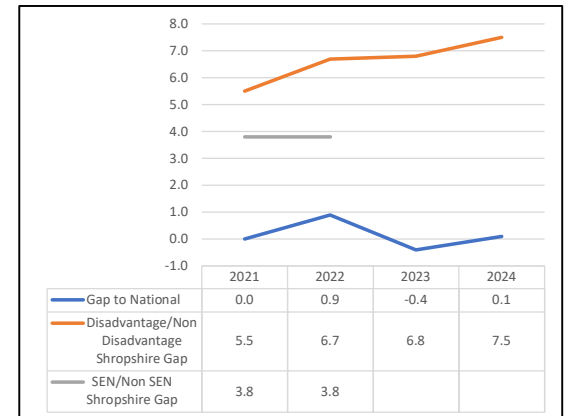
2021	2022	2023
24	79	29
34	93	74
37	115	53
14	66	33
60	93	91
16	64	29
31	86	35
104	104	
No published comparators		



Secondary School Attendance (Full Academic Year)	2021	2022	2023	* current 2023-2024 to date	Trend
All Pupils	94.5	90.1	91.1	91.0	
National	94.5	91.0	90.7	91.1	
Free School Meals (eligible in the last 6 years (FSM6))	90.1	84.8	85.7	85.0	
Non Free School Meals (not eligible in the last 6 years (FSM6))	95.6	91.5	92.5	92.5	
SEND (SEN Support & EHCP)	91.2	86.9	87.8		
EHCP	86.1	86.2	87.3	80.7	
SEN Support	92.4	87.0	87.9	87.5	
Non SEND	95.0	90.7	91.7	92.0	
CLA (based on published 903)	88.7	90.7			
CLA (all children)			89.0		

Shropshire	National	Statistical Neighbour	West Midlands
91.1	91.0	90.6	90.9
85.7	86.0	84.6	86.8
92.5	92.9	92.3	92.9
87.8	86.4	86.2	86.7
87.3	85.3	84.4	85.4
87.9	86.6	86.4	86.9
91.7	91.9	91.6	91.8
0.0			
No published comparators			

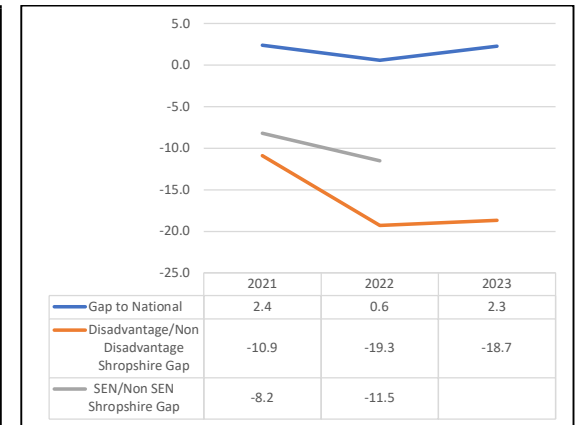
2021	2022	2023
78	121	72
108	126	72
113	144	120
73	89	42
71	84	52
50	93	43
92	132	89
77	77	
No published comparators		



Primary School Persistently Absent (10% or more missed) (Full Academic Year)	2021	2022	2023	* current 2023-2024 to date	Trend
All Pupils	6.4	17.1	13.9	14.0	
National	8.8	17.7	16.2	16.3	
Free School Meals (eligible in the last 6 years (FSM6))	14.9	32.3	28.6	28.5	
Non Free School Meals (not eligible in the last 6 years (FSM6))	4.0	13.0	9.9	10.7	
SEND (SEN Support & EHCP)	13.2	26.6	22.7		
EHCP	30.0	35.7	29.8	32.4	
SEN Support	11.0	25.4	21.8	21.0	
Non SEND	5.0	15.1	12.0	12.9	
CLA (based on published 903)	18.6	10.1			
CLA (all children)					

Shropshire	National	Statistical Neighbour	West Midlands
13.9	16.2	15.1	17.7
28.6	29.3	29.8	29.3
9.9	10.9	10.7	11.7
22.7	25.7	24.9	26.8
29.8	31.0	31.9	33.0
21.8	24.8	23.5	26.0
12.0	13.9	12.7	15.4
0.0			
No published comparators			

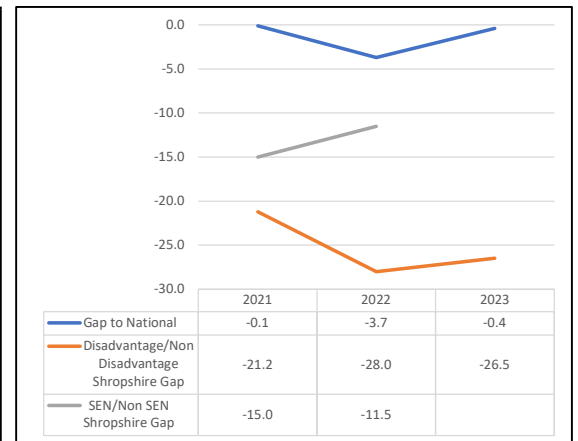
2021	2022	2023
11	69	28
22	107	68
26	92	47
13	80	24
61	129	71
15	68	25
17	66	34
57	47	
No published comparators		



Secondary School Persistently Absent (10% or more missed) (Full Academic Year)	2021	2022*	2023	* current 2023-2024 to date	Trend
All Pupils	14.9	31.4	26.9	27.8	
National	14.8	27.7	26.5	25.5	
Free School Meals (eligible in the last 6 years (FSM6))	31.6	53.5	47.6	49.1	
Non Free School Meals (not eligible in the last 6 years (FSM6))	10.4	25.5	21.1	22.7	
SEND (SEN Support & EHCP)	27.8	41.1	37.6		
EHCP	46.7	41.4	38.6	45.0	
SEN Support	23.3	41.1	37.5	37.7	
Non SEND	12.8	29.6	24.6	25.1	
CLA (based on published 903)	41.3	28.3			
CLA (all children)					

Shropshire	National	Statistical Neighbour	West Midlands
26.9	26.5	27.7	27.4
47.6	43.8	48.4	42.7
21.1	19.5	21.4	19.7
37.6	39.1	39.5	39.2
38.6	39.1	41.0	39.8
37.5	39.0	39.4	39.1
24.6	23.8	24.7	24.7
0.0			
No published comparators			

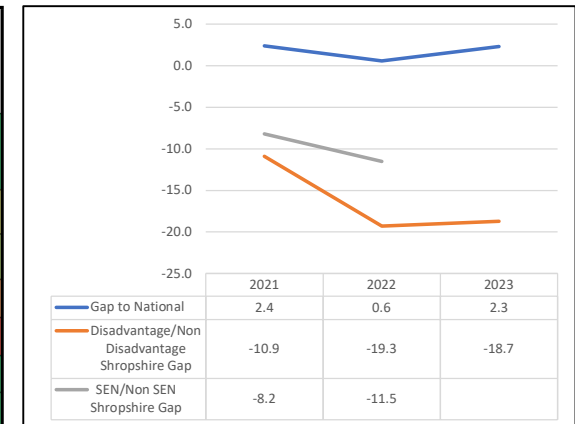
2021	2022	2023
83	126	87
114	145	104
111	143	121
90	102	59
91	105	79
63	102	58
91	131	91
83	109	
No published comparators		



Primary School Severely Absent (50% or more missed) (Full Academic Year)	2021	2022	2023	* current 2023-2024 to date	Trend
All Pupils	0.5	0.5	0.4	0.5	
National	0.7	0.6	0.7		
Free School Meals (eligible in the last 6 years (FSM6))	1.0	1.0	0.9	1.2	
Non Free School Meals (not eligible in the last 6 years (FSM6))	0.1	0.2	0.2	0.4	
SEND (SEN Support & EHCP)	0.8	0.9	1.1		
EHCP	1.9	2.1	2.7	3.8	
SEN Support	0.7	0.7	0.9	1.0	
Non SEND	0.2	0.2	0.1	0.2	
CLA (based on published 903)					
CLA (all children)					

Shropshire	National	Statistical Neighbour	West Midlands
0.4	0.7	0.6	0.8
0.9	1.3	1.4	1.3
0.2	0.3	0.3	0.4
1.1	1.5	1.7	1.6
2.7	3.2	4.0	3.9
0.9	1.2	1.3	1.3
0.1	0.3	0.2	0.4
0.0			
No published comparators			

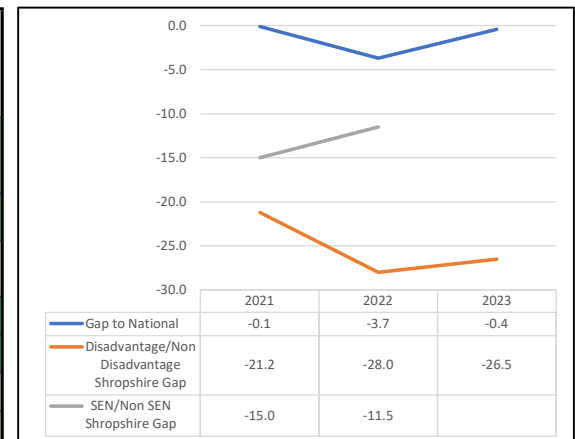
2021	2022	2023
21	33	6
76	71	32
16	37	26
50	49	56
59	73	73
60	59	54
36	65	6
No published comparators		



Secondary School Severely Absent (50% or more missed) (Full Academic Year)	2021	2022*	2023	* current 2023-2024 to date	Trend
All Pupils	1.4	3.1	3.1	3.3	
National	1.5	2.7	3.4		
Free School Meals (eligible in the last 6 years (FSM6))	2.9	6.2	6.2	8.0	
Non Free School Meals (not eligible in the last 6 years (FSM6))	0.8	1.8	1.8	2.2	
SEND (SEN Support & EHCP)	2.7	6.4	6.2		
EHCP	4.3	7.8	6.1	16.1	
SEN Support	2.3	6.1	6.2	6.3	
Non SEND	1.0	2.3	2.2	2.1	
CLA (based on published 903)					
CLA (all children)					

Shropshire	National	Statistical Neighbour	West Midlands
3.1	3.4	3.6	3.4
6.2	6.7	7.8	6.0
1.8	1.7	2.0	1.7
6.2	7.6	7.8	7.1
6.1	9.6	10.5	9.7
6.2	7.2	7.4	6.8
2.2	2.2	2.3	2.3
0.0			
No published comparators			

2021	2022	2023
72	107	67
77	97	64
112	133	98
56	98	52
55	83	39
44	100	59
106	121	80
No published comparators		



Data Source; published DfE statistics - Pupil absence statistics. N.B. due to time pressures during the Covid pandemic, DfE did not publish pupil absence in schools for academic year 2019 to 2020

A pupil is classified as a persistent absentee if they miss 10% or more of their own possible sessions

* Figures derived from the DfE Attendance Portal are published as experimental official statistics to give an indicative figure for the absence rate during the 2023/24 academic year to date.

Exclusions

Latest Benchmark 2022

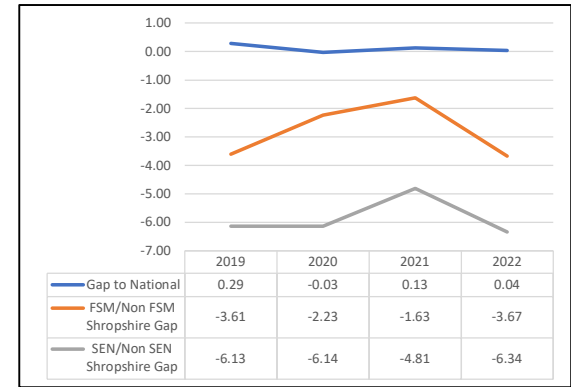
National Ranking (1 being highest, 152 lowest)

Gaps

<u>Primary School Suspension Rate (Full Academic Year)</u>	2019	2020*	2021*	2022	Trend
All Pupils	1.12	1.03	0.86	1.38	
National	1.41	1.00	0.99	1.42	
Free School Meals (FSM)	4.34	2.98	2.23	4.42	
Non Free School Meals (Non FSM)	0.73	0.75	0.60	0.75	
SEND (SEN Support & EHCP)	6.43	6.35	5.03	6.82	
EHCP	9.47	10.72	6.15	11.40	
SEN Support	6.04	5.79	4.88	6.20	
Non SEND	0.30	0.21	0.22	0.48	

Shropshire	National	Statistical Neighbour	West Midlands
1.38	1.42	1.85	1.51
4.42	3.53	5.21	3.28
0.75	0.79	1.10	0.84
6.82	7.38	9.47	7.41
11.40	13.75	19.33	15.87
6.20	6.27	7.63	6.36
0.48	0.35	0.40	0.43

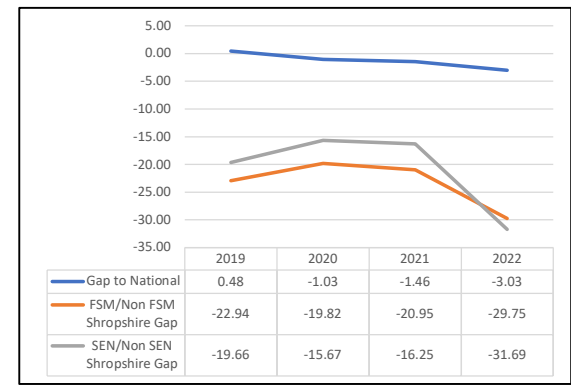
2020	2021	2022
93	71	92
93	77	111
114	96	86
108	86	85
92	49	76
118	106	88
76	76	131



<u>Secondary School Suspension Rate (Full Academic Year)</u>	2019	2020*	2021*	2022	Trend
All Pupils	10.27	8.46	9.94	16.99	
National	10.75	7.43	8.48	13.96	
Free School Meals (FSM)	31.16	26.08	28.00	42.21	
Non Free School Meals (Non FSM)	8.22	6.26	7.05	12.46	
SEND (SEN Support & EHCP)	27.59	22.26	24.15	44.41	
EHCP	27.17	24.56	26.07	46.24	
SEN Support	27.72	21.67	23.69	44.04	
Non SEND	7.93	6.59	7.90	12.72	

Shropshire	National	Statistical Neighbour	West Midlands
16.99	13.96	13.99	13.42
42.21	34.20	38.12	28.74
12.46	8.60	9.31	8.45
44.41	36.47	38.17	32.79
46.24	38.03	45.27	33.98
44.04	36.19	36.79	32.63
12.72	10.28	9.52	10.11

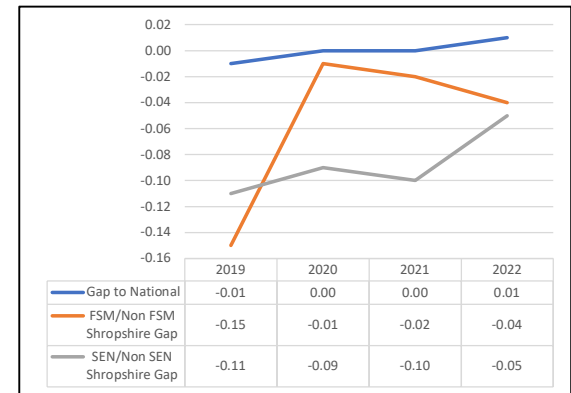
2020	2021	2022
111	105	112
123	118	115
116	116	129
97	94	110
98	83	112
97	91	110
115	117	115



<u>Primary School Permanent Exclusion Rate (Full Academic Year)</u>	2019	2020*	2021*	2022	Trend
All Pupils	0.03	0.02	0.01	0.01	
National	0.02	0.02	0.01	0.02	
Free School Meals (FSM)	0.16	0.03	0.03	0.05	
Non Free School Meals (Non FSM)	0.01	0.02	0.01	0.01	
SEND (SEN Support & EHCP)	0.13	0.10	0.10	0.06	
EHCP	0.30	0.00	0.00	0.00	
SEN Support	0.11	0.11	0.11	0.07	
Non SEND	0.02	0.01	0.00	0.01	

Shropshire	National	Statistical Neighbour	West Midlands
0.01	0.02	0.02	0.03
0.05	0.05	0.07	0.08
0.01	0.01	0.01	0.01
0.06	0.09	0.12	0.16
0.00	0.13	0.26	0.27
0.07	0.08	0.10	0.15
0.01	0.00	0.00	0.01

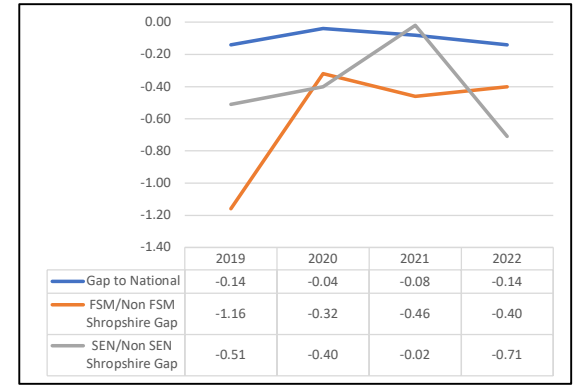
2020	2021	2022
102	119	86
83	108	101
121	135	82
102	129	78
1	1	1
112	134	87
127	1	115



<u>Secondary School Permanent Exclusion Rate (Full Academic Year)</u>	2019	2020*	2021*	2022	Trend
All Pupils	0.34	0.17	0.18	0.30	
National	0.20	0.13	0.10	0.16	
Free School Meals (FSM)	1.40	0.45	0.58	0.64	
Non Free School Meals (Non FSM)	0.24	0.13	0.12	0.24	
SEND (SEN Support & EHCP)	0.79	0.52	0.20	0.91	
EHCP	0.46	0.25	0.00	0.54	
SEN Support	0.89	0.59	0.24	0.98	
Non SEND	0.28	0.12	0.18	0.20	

Shropshire	National	Statistical Neighbour	West Midlands
0.30	0.16	0.20	0.22
0.64	0.44	0.62	0.52
0.24	0.08	0.12	0.12
0.91	0.46	0.60	0.58
0.54	0.27	0.34	0.43
0.98	0.50	0.65	0.60
0.20	0.11	0.13	0.15

2020	2021	2022
105	128	131
97	134	114
118	133	150
113	51	137
104	1	122
116	61	138
98	146	133



2022-23 full year statistics will be published in July 2024

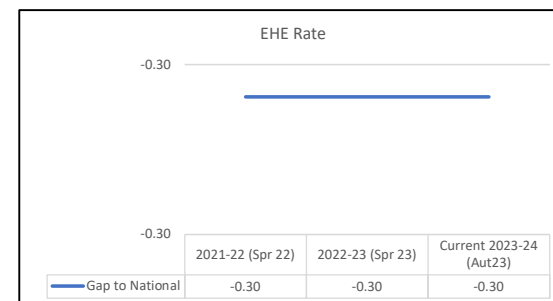
1. For 2019/20 and 2020/21, while suspensions and permanent exclusions were possible throughout the academic year, pandemic restrictions will have had an impact on the numbers presented and caution should be taken when comparing across years.

Latest Term Benchmark Autumn 23

Number of EHE children at any point during a full year and latest term available	N/A	2021-22	2022-23	Current 2023-24 (Aut23)	Trend
All Pupils		630	760	550	
National		116,300	126,100	92,000	

Shropshire	National	Statistical Neighbour	West Midlands
550	92,000	1,016	10,150

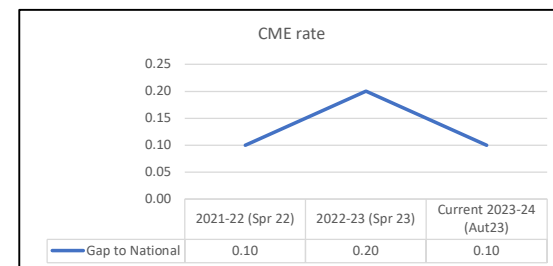
2021-22	2022-23	2023-24
-	-	-



EHE Termly rate - mid year point (Spring Term)	N/A	(Aut 22)	(Spr 23)	(Aut23)	Trend
All Pupils		1.3	1.4	1.4	
National		1.0	1.1	1.1	

Shropshire	National	Statistical Neighbour	West Midlands
1.4	1.1	1.6	1.1

(Aut 22)	(Spr 23)	(Aut23)
-	-	-



Number of CME children at any point during a full year and latest term available	N/A	2021-22	2022-23	Current 2023-24 (Aut23)	Trend
All Pupils		180	270	130	
National		94,900	117,100	33,000	

Shropshire	National	Statistical Neighbour	West Midlands
130	33,000	216	3,480

2021-22	2022-23	2023-24
-	-	-

CME Termly rate - mid year point (Spring Term)	N/A	(Aut 22)	(Spr 23)	(Aut23)	Trend
All Pupils		0.2	0.1	0.3	
National		0.3	0.3	0.4	

Shropshire	National	Statistical Neighbour	West Midlands
0.3	0.4	0.3	0.4

(Aut 22)	(Spr 23)	(Aut23)
-	-	-

DfE figures are published as official statistics in development (first collection was in autumn 22)

Data is presented for both the number of children at a point in time on the autumn term 2023 census day, and the number of children who were EHE at any point during the 2022/23 academic year